

EXPLANATORY PLAN OF EASEMENT OF PART OF LOT 'C', BLOCK 'K', DISTRICT LOT 230, PLAN BCP

PURSUANT TO SECTION 99 (1) (e) OF THE LAND TITLE ACT

BCGS 92G036

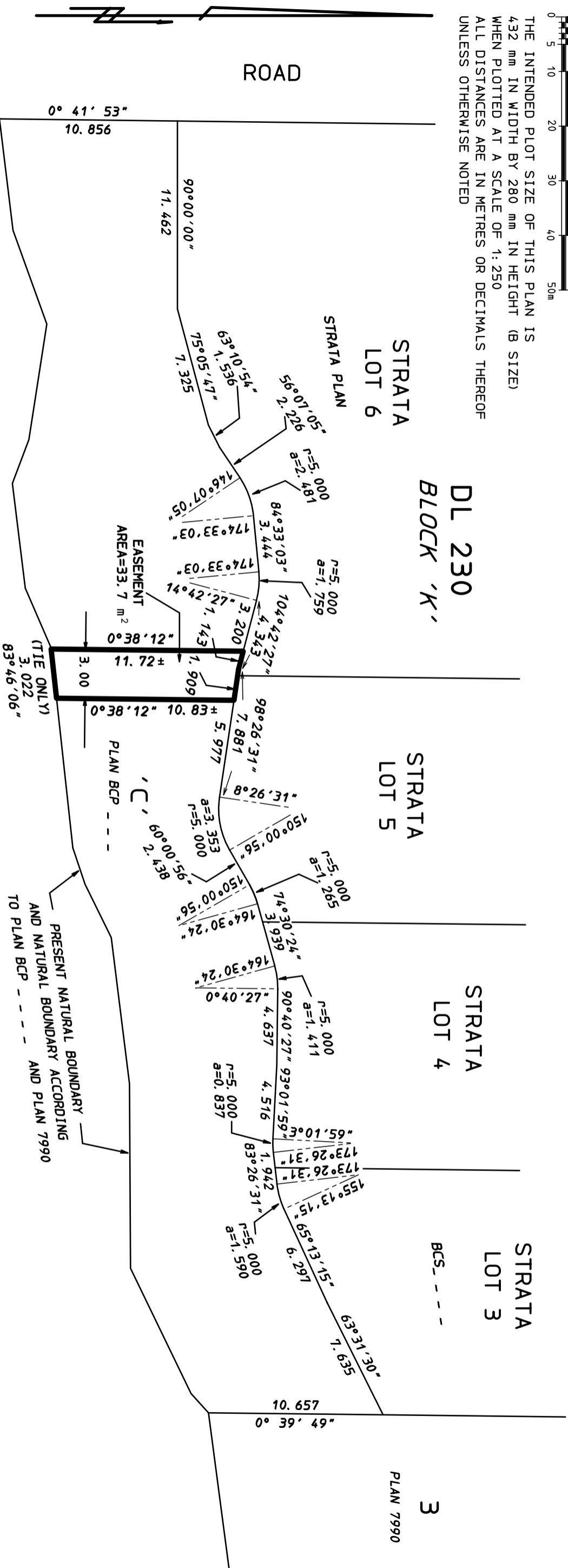


THE INTENDED PLOT SIZE OF THIS PLAN IS 432 mm IN WIDTH BY 280 mm IN HEIGHT (B SIZE) WHEN PLOTTED AT A SCALE OF 1:250 ALL DISTANCES ARE IN METRES OR DECIMALS THEREOF UNLESS OTHERWISE NOTED

REGISTRAR

PLAN BCP

DEPOSITED IN THE LAND TITLE OFFICE AT NEW WESTMINSTER, B. C., THIS DAY OF 20



LEGEND

INTEGRATED SURVEY AREA No. 16 DISTRICT OF NORTH VANCOUVER GRID BEARINGS ARE DERIVED FROM PLAN BCS

THE PLAN WAS COMPLETED AND CHECKED, AND THE CHECKLIST FILED UNDER # xxxxx, ON THE DAY OF , 2009 AND IS HEREBY CERTIFIED CORRECT IN ACCORDANCE WITH LAND TITLE OFFICE RECORDS

BURRARD INLET

THIS PLAN LIES WITHIN THE GREATER VANCOUVER REGIONAL DISTRICT

B. C. L. S.

3707-3739 DOLLARTON HIGHWAY M 3044-03 NVD

HOBBS, WINTER & MACDONALD B. C. LAND SURVEYORS 113 - 828 HARBOURSIDE DRIVE, NORTH VANCOUVER, B. C., V7P 3R9 TEL 604-986-1371 FAX 604-986-5204 EMAIL: adm@hwsurveyors.com